

Directions to the Golden Inn

From Points North:

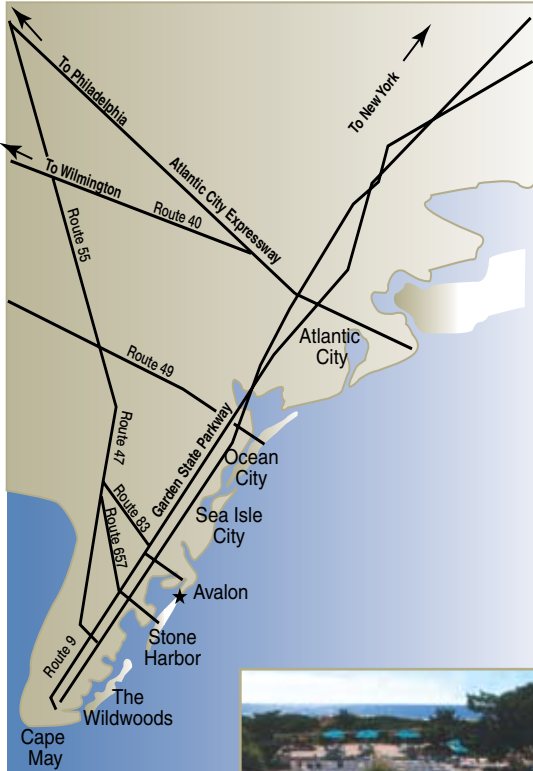
Take the Garden State Parkway South to Exit 13 - Avalon. Go to the end of the exit ramp, at the stop sign turn left onto Avalon Blvd. Travel east to the town of Avalon, go to the second traffic light, turn right onto Dune Dr. continue traveling south to 78th St. Hotel is on left.

From Pennsylvania and Points West:

After crossing the Walt Whitman Bridge take Rt. 42 to the A.C. Expressway east to Exit 7-S (Garden State Parkway-South) Take the GS Parkway to Exit 13 - Avalon. Go to the end of the exit ramp, at the stop sign turn left onto Avalon Blvd. Travel east to the town of Avalon, go to the second traffic light, turn right onto Dune Dr. continue traveling south to 78th St. Hotel is on left.

From Delaware and Points South:

After crossing the Delaware Memorial Bridge, take Rt. 40 East to Rt. 55 South which turns into Rt. 47 South. Turn left onto Rt. 83 East-go to end. Turn right onto Rt. 9 South, at the first traffic light turn left onto Avalon Blvd. Continue to the town of Avalon, go to the second traffic light, turn right onto Dune Dr. continue traveling south to 78th St. Hotel is on left.



Deposit Requirements

- ◇ Deposit is required to be received within 14 days from your reservation request. If we do not receive your deposit within 14 days, your tentative reservation request will be automatically canceled without notification.
- ◇ One night's deposit is required with a 1 to 2 nights reservation request.
- ◇ 50% deposit is required for 3 nights or more stay.
- ◇ Full payment is required for the following weekends: June 19th through September 6th weekends, Memorial Day, 4th of July, Labor Day and New Year's Celebration.
- ◇ 5 & 7 Night Packages are 50% payment, non-refundable.
- ◇ Super Saver Program (20% discount) requires 50% nonrefundable deposit on reservations during the period of June 19th through September 6th, made prior to February 28th, 2009. Note: no changes or refunds will be honored after receipt of deposit by deadline of February 28th, 2009.
- ◇ Extended Vacation reservations (10% discount), available year 'round require a 50% nonrefundable deposit.
- ◇ All advanced deposits must be secured by check or money order - we accept Visa, Mastercard & American Express for final payment of charges at the time of check-out.

Cancellation Requirements

- ◇ If cancellation of your reservation is not received at least 14 days prior to the confirmed date of your arrival - your deposit will be forfeited. A cancellation number must be obtained to receive a refund. Super Saver, Extended Vacations, June 19th through September 6th weekends and Holiday weekends are nonrefundable.
- ◇ There will be a 25% service fee - minimum \$50.00 on all refundable deposits.
- ◇ In the event of a late arrival or an early departure - you are responsible for full payment of the entire length of your reservation. No changes will be honored less than 14 days prior to arrival. Requests for an extension to your reservation will be based on availability.

General Hotel and Reservations Information

- ◇ In the event that the specified room type is not available, a comparable room type will be assigned. In addition, special requests are not guaranteed, but every attempt will be made to honor them.
- ◇ Two nights minimum stay during weekends year 'round. (Arrival Friday - Departure Sunday) Three night stays during Holiday and Special weekends.
- ◇ One parking space with permit per room. Vehicles without proper permits are subject to removal at the owner expense.
- ◇ Sorry, no pets are permitted in the hotel at anytime.
- ◇ Two beach tags per room. Refundable deposit, upon return of tags, at check-out. Sorry, we cannot provide additional beach tags for day guests.
- ◇ Food and Beverage Resort Credit is not redeemable for cash or credit for payment towards the room rate portion of your final hotel folio.
- ◇ **Room rate and package rates do not include 7% New Jersey sales tax and 5% occupancy tax.**

Open 365 Days a Year

Breakfast, Lunch & Dinner • Daily Maid Service

• Restaurant • Heated Outdoor Pool

• Private Garden Area

• Room Service

• Two Complimentary Beach Tags Per Room during your Stay
(Must be returned upon check out at 11:00 AM)

• Deluxe Accommodations with Two Queens or One King Bed

• Gift Certificates Available - Call 609-967-2119



2008-2009 RATE SCHEDULE



Vacation at
Avalon's Premier
Beachfront Resort



Oceanfront at 78th Street
Avalon, NJ 08202
(609) 368-5155
www.Goldeninn.com



Summer Holiday Special & Mid-Week Getaway Specials

Memorial Day Weekend Starting at \$529 per couple**

Friday May 22 - Monday May 25

Includes \$150 Food & Beverage Resort Credit

Full Payment Non Refundable



Labor Day Weekend Starting at \$759 per couple**

Friday September 4 - Monday September 7

Includes \$150 Food & Beverage Resort Credit


Full Payment Non Refundable

**West Wing, First Floor standard room
**Accommodations are subject to availability
**Does not include tax or gratuities

2009																																																																																																			
January						February						March						April						May						June																																																																					
S	M	T	W	Th	F	S	S	M	T	W	Th	F	S	S	M	T	W	Th	F	S	S	M	T	W	Th	F	S	S	M	T	W	Th	F	S	S	M	T	W	Th	F	S																																																										
4	5	6	7	8	9	10	1	2	3	4	5	6	7	8	9	10	11	12	13	14	15	16	17	18	19	20	21	22	23	24	25	26	27	28	29	30	31	1	2	3	4	5	6	7	8	9	10	11	12	13	14	15	16	17	18	19	20	21	22	23	24	25	26	27	28	29	30	31	1	2	3	4	5	6	7	8	9	10	11	12	13	14	15	16	17	18	19	20	21	22	23	24	25	26	27	28	29	30	31
July						August						September						October						November						December																																																																					
S	M	T	W	Th	F	S	S	M	T	W	Th	F	S	S	M	T	W	Th	F	S	S	M	T	W	Th	F	S	S	M	T	W	Th	F	S	S	M	T	W	Th	F	S	S	M	T	W	Th	F	S																																																			
5	6	7	8	9	10	11	2	3	4	5	6	7	8	6	7	8	9	10	11	12	13	14	15	16	17	18	19	20	21	22	23	24	25	26	27	28	29	30	1	2	3	4	5	6	7	8	9	10	11	12	13	14	15	16	17	18	19	20	21	22	23	24	25	26	27	28	29	30	1	2	3	4	5	6	7	8	9	10	11	12	13	14	15	16	17	18	19	20	21	22	23	24	25	26	27	28	29	30	31

At the Golden Inn...It's Always A Great Day At the Beach

EAST WING 2008 - 2009 LODGING RATE SCHEDULE

	Rates quoted for single or double occupancy				OCEAN FRONT	DELUXE ONE BEDROOM SUITE
	STANDARD ROOM		EFFICIENCY			
	1ST FLOOR	2ND & 3RD FLOOR	1ST FLOOR	2ND & 3RD FLOOR		
OCTOBER 31, 2008 - APRIL 16, 2009	\$155	\$195	\$175	\$235	\$325	\$325
APRIL 17 - JUNE 18	\$235	\$245	\$245	\$265	\$355	\$355
JUNE 19 - SEPTEMBER 6	\$250-325	\$315-345	\$275-345	\$355-395	\$495	\$495
**SUPERSAVER RATES	\$260	\$276	\$292	\$316	\$446	\$446
**Reserve Before February 28, 2009 Non-Refundable Deposit	(20% OFF Published Rate - 4 Night Minimum)				(10% OFF Published Rate - 7 Night Min.)	
Extended Vacations - Additional 10% Off - 7 Night Minimum						
SEPTEMBER 7 - OCTOBER 19, 2009	\$235	\$245	\$245	\$265	\$355	\$355

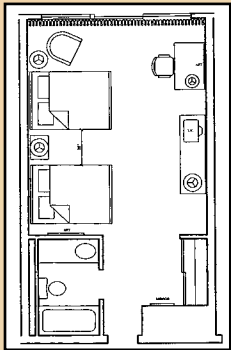
\$20 per person per night for each additional person over 12 years of age
Weekend Rates - \$20 additional per night for reservations that include a Friday & Saturday night - Memorial Day through Labor Day

5 & 7 NIGHT PACKAGE RATES*

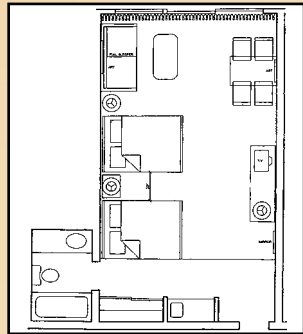
SUMMER 2009		STANDARD ROOM		EFFICIENCY	
		1ST FLOOR	2ND & 3RD FLOOR	1ST FLOOR	2ND & 3RD FLOOR
JULY 5 - SEPT. 4	5 nights	\$1662	\$1887	\$1787	\$2137
**SUPERSAVER	5 nights	\$1502	\$1697	\$1602	\$1922
JULY 5 - SEPT. 6	7 nights	\$2214	\$2504	\$2419	\$2954
**SUPERSAVER	7 nights	\$1989	\$2249	\$2169	\$2654

* Package prices quoted per couple, Includes \$200 Food & Beverage Resort Credit

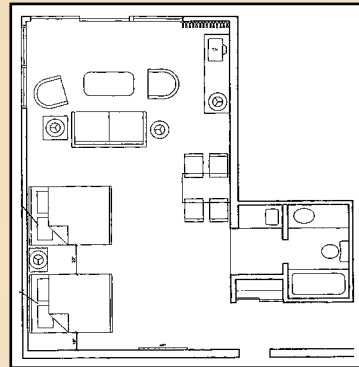
* 5 Night Packages Available Arriving on Sunday - Departing on Friday



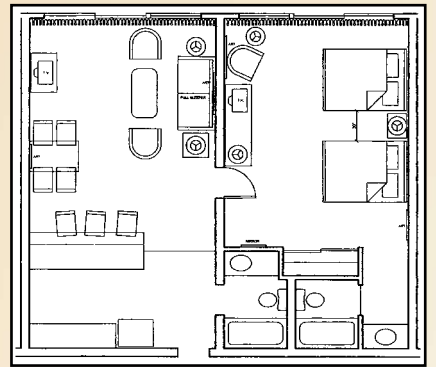
East Wing Standard



East Wing Efficiency




Center Ocean Front Studio



Deluxe One Bedroom Suite



WEST TOWER 2008 - 2009 LODGING RATE SCHEDULE

	Rates quoted for single or double occupancy			
	STANDARD ROOM		EFFICIENCY	
	1ST FLOOR	2ND & 3RD FLOOR	1ST FLOOR	2ND & 3RD FLOOR
OCTOBER 31, 2008 - APRIL 16, 2009	\$99	\$145	\$125	\$175
APRIL 17 - JUNE 18	\$145	\$175	\$165	\$195
JUNE 19 - SEPTEMBER 6	\$225-255	\$265-295	\$245-275	\$295-345
**SUPERSAVER RATES	\$204	\$220	\$236	\$276
**Reserve Before February 28, 2009 Non-Refundable Deposit	(20% OFF Published Rate - 4 Night Minimum)			
Extended Vacations - Additional 10% Off - 7 Night Minimum				
SEPTEMBER 7 - OCTOBER 19, 2009	\$145	\$175	\$165	\$195



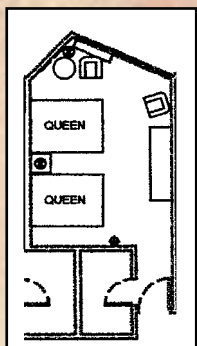
\$20 per person per night for each additional person over 12 years of age
Weekend Rates - \$20 additional per night for reservations that include a Friday & Saturday night - Memorial Day through Labor Day

5 & 7 NIGHT PACKAGE RATES*

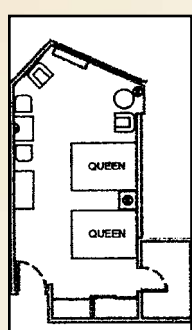
SUMMER 2009		STANDARD ROOM		EFFICIENCY	
		1ST FLOOR	2ND & 3RD FLOOR	1ST FLOOR	2ND & 3RD FLOOR
JULY 5 - SEPT. 4	5 nights	\$1112	\$1177	\$1237	\$1287
**SUPERSAVER	5 nights	\$999	\$1062	\$1112	\$1162
JULY 5 - SEPT. 6	7 nights	\$1622	\$1722	\$1822	\$1922
**SUPERSAVER	7 nights	\$1462	\$1552	\$1642	\$1732

* Package prices quoted per couple, Includes \$200 Food & Beverage Resort Credit

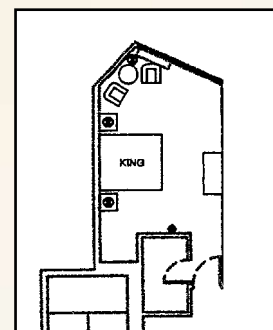
* 5 Night Packages Available Arriving on Sunday - Departing on Friday



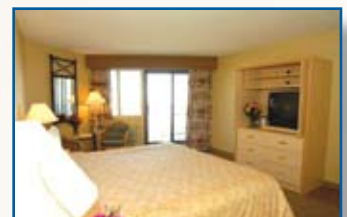
West Wing 2 Queen Standard



West Wing 2 Queen Efficiency



West Wing King Standard



Visit us at www.Goldenin.com for more information.